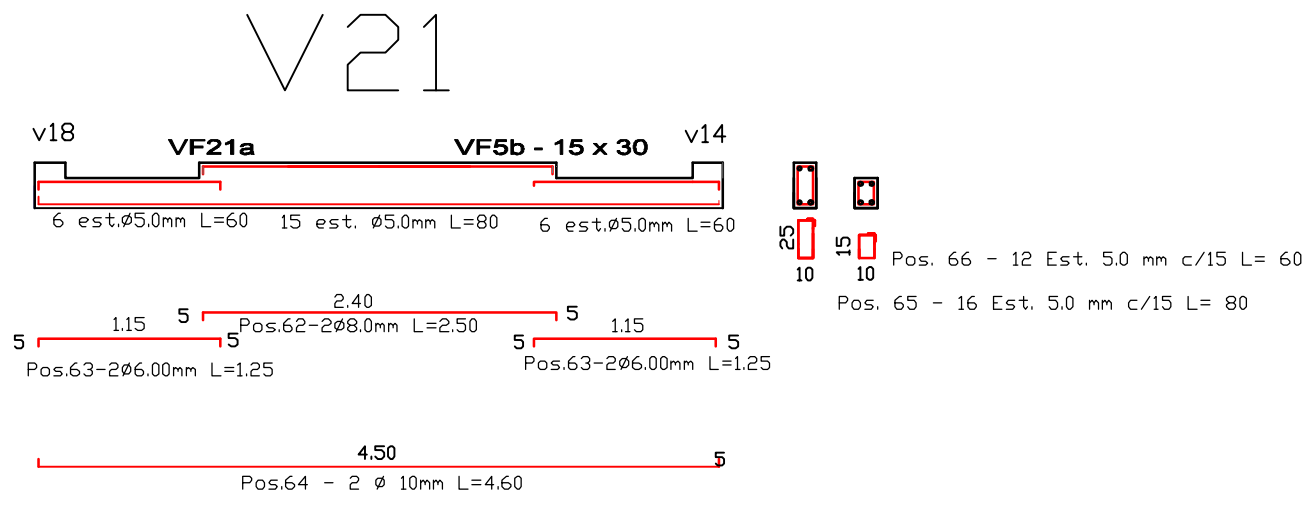
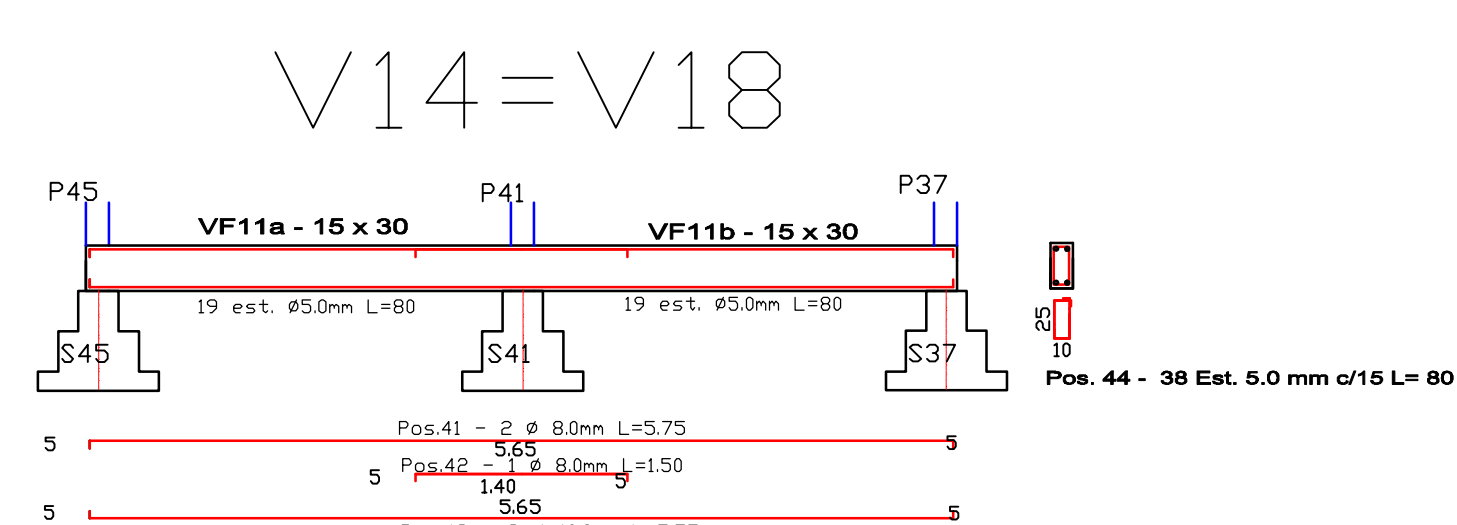
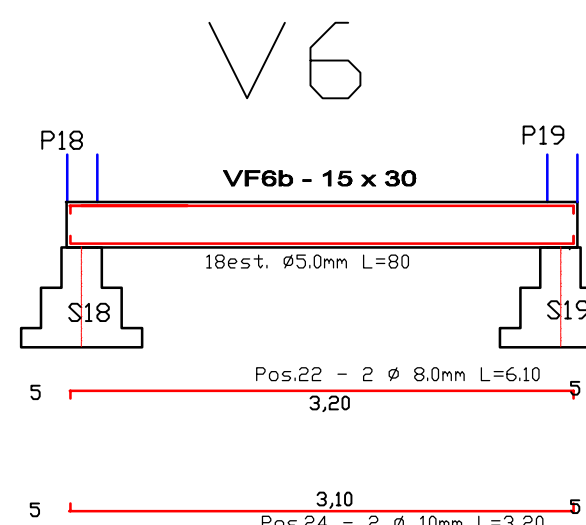
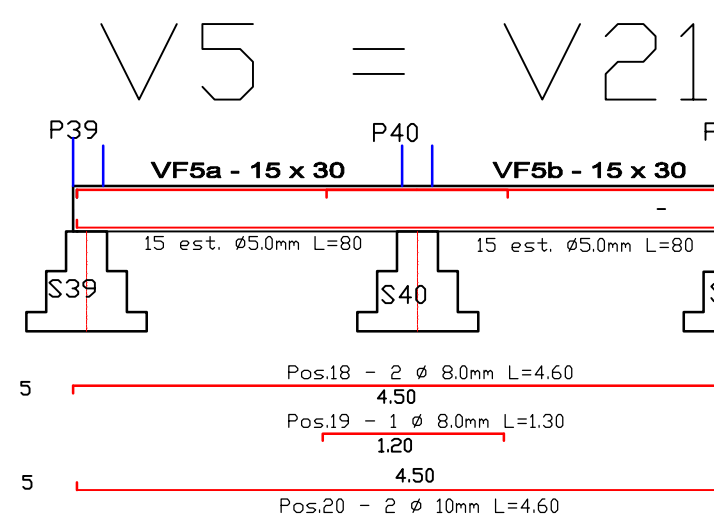
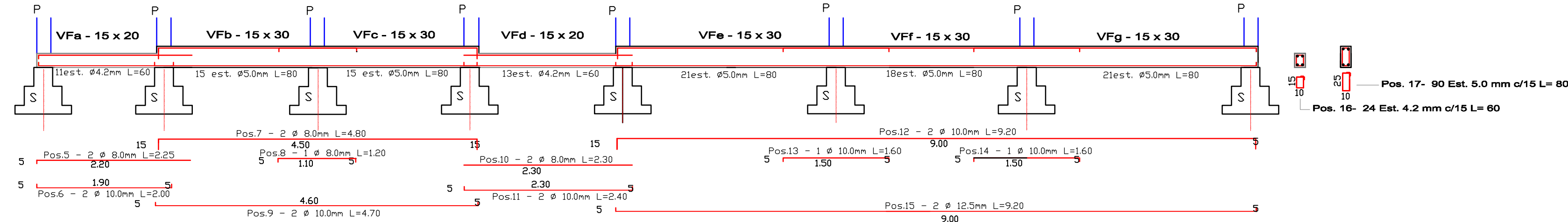


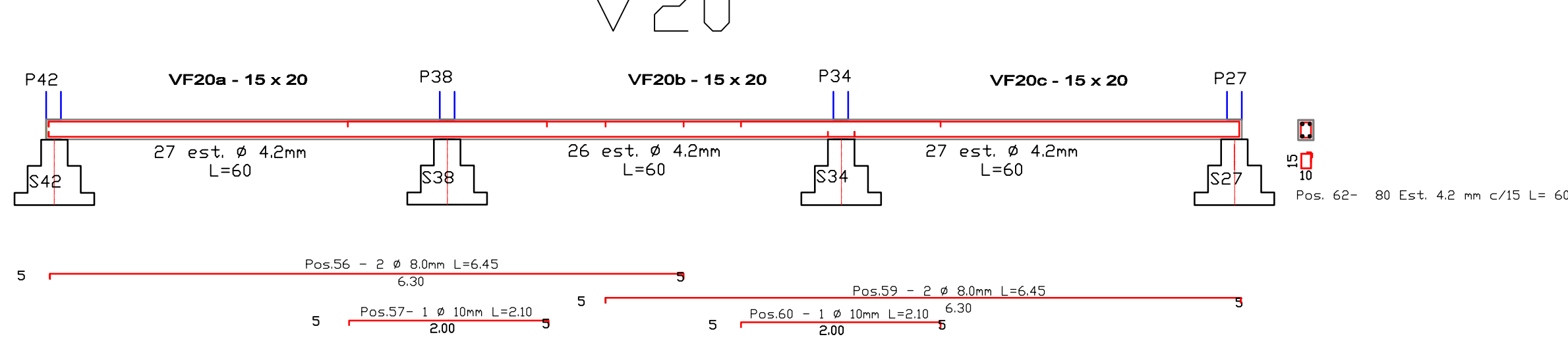
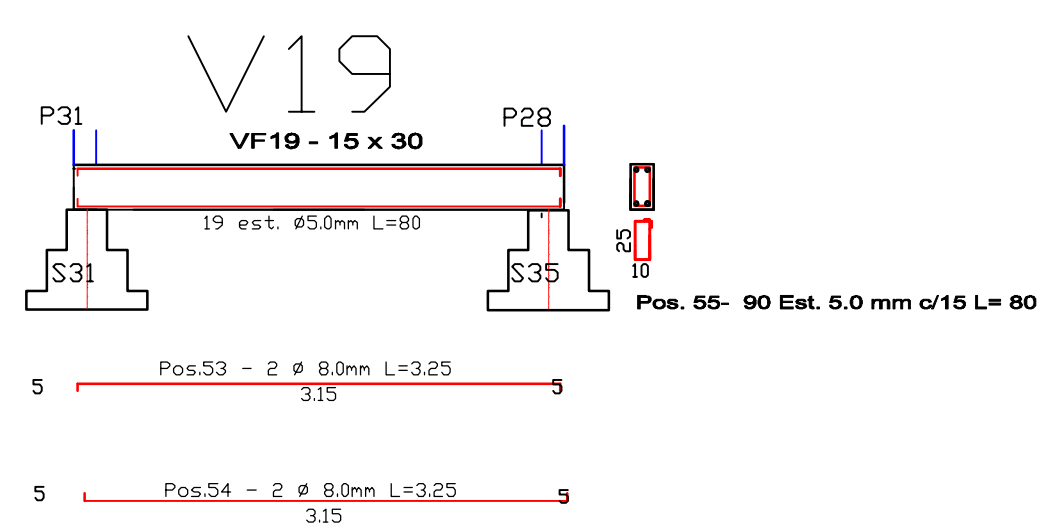
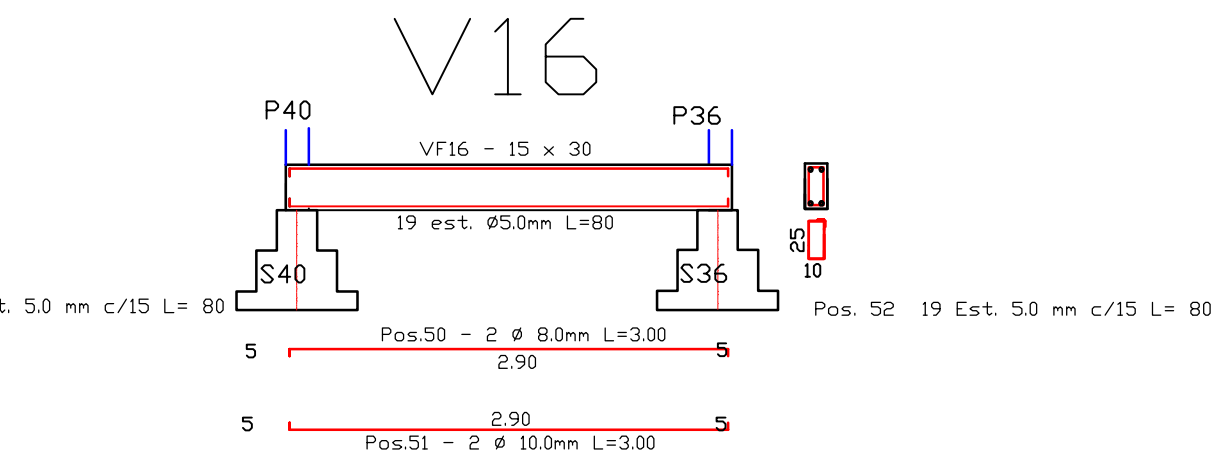
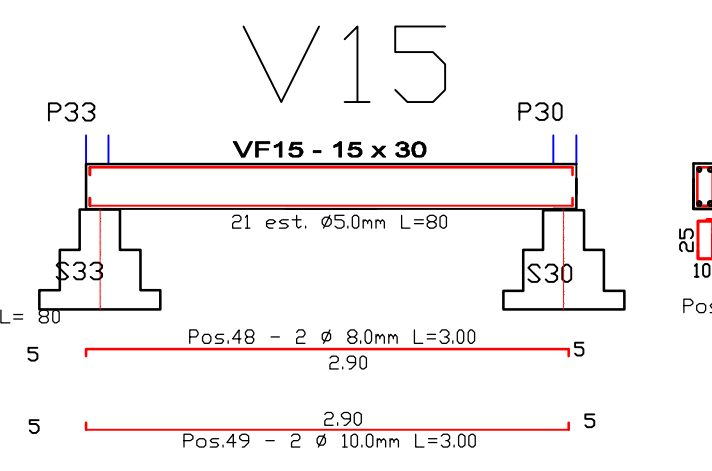
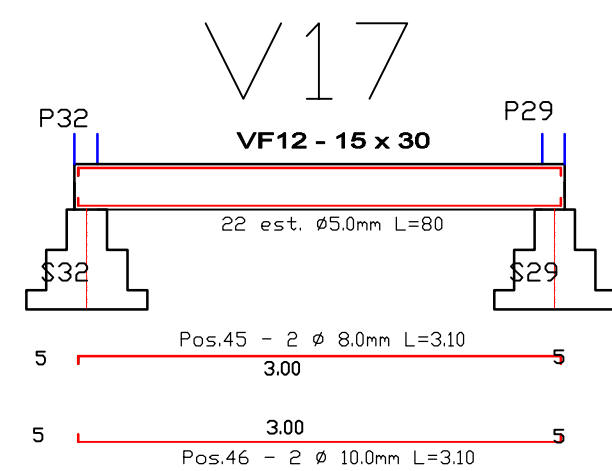
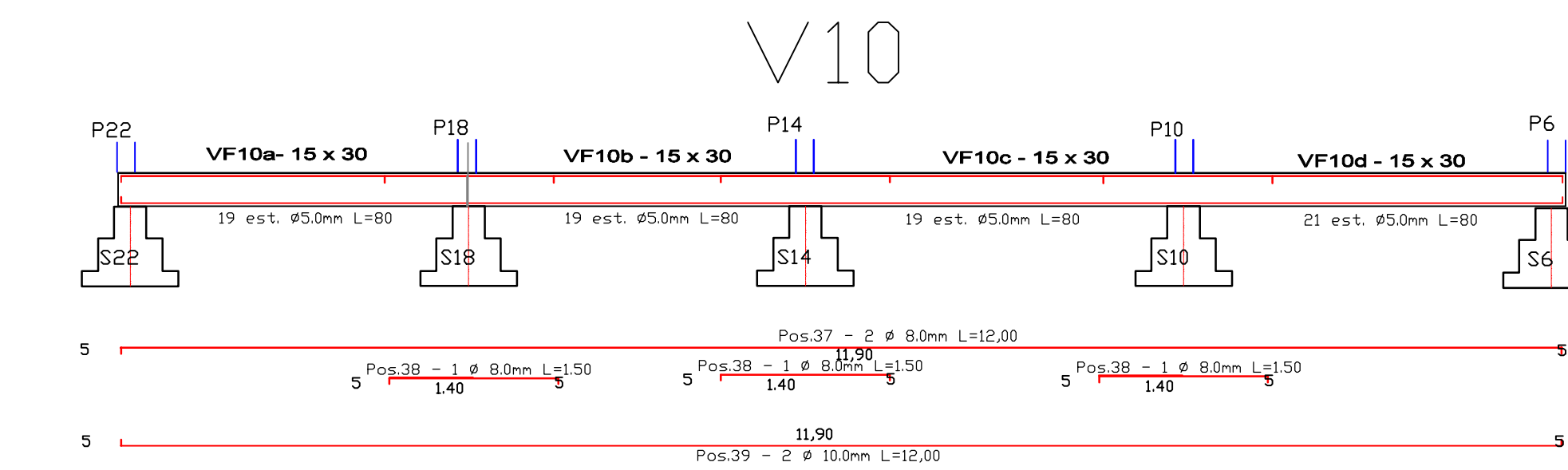
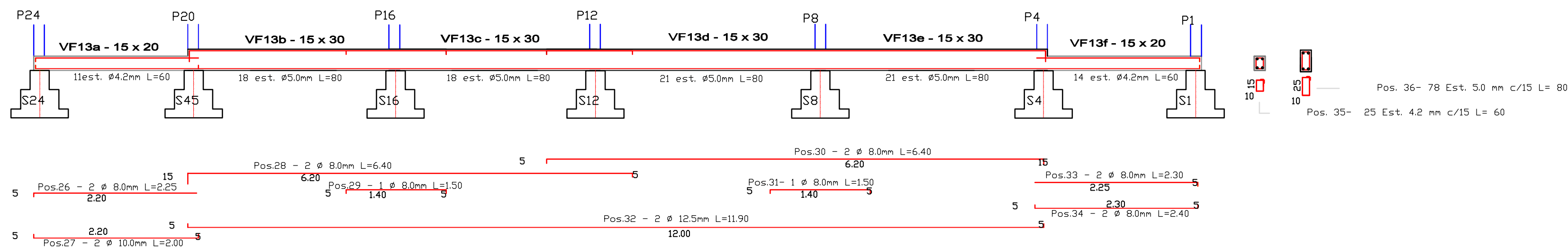
V1=V8  
V2=V3=V4=V7  
V9=V13  
V14=V18  
V17



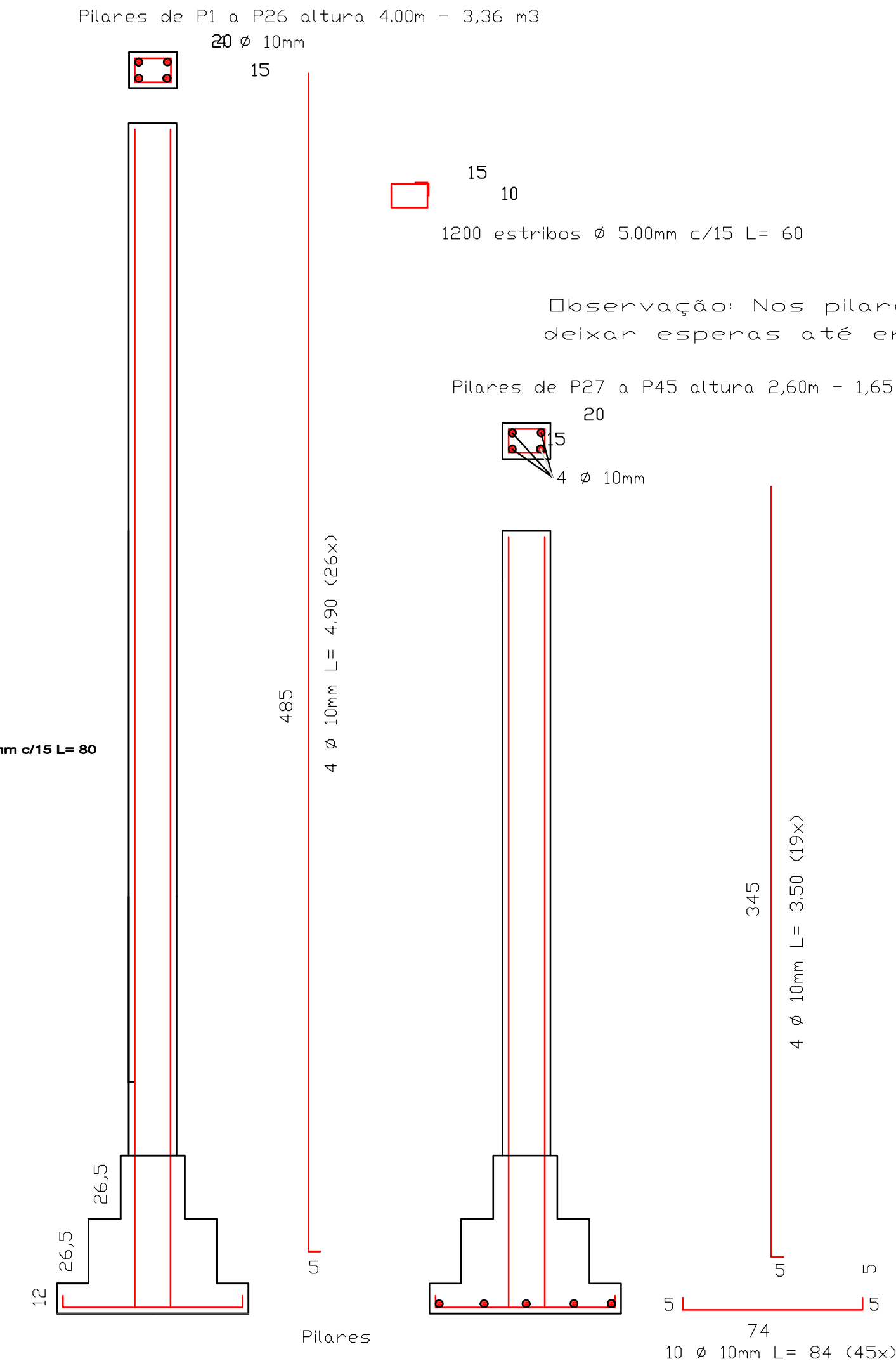
V2=V3=V4=V7



V9=V13

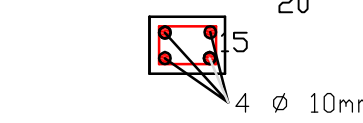


Pilares



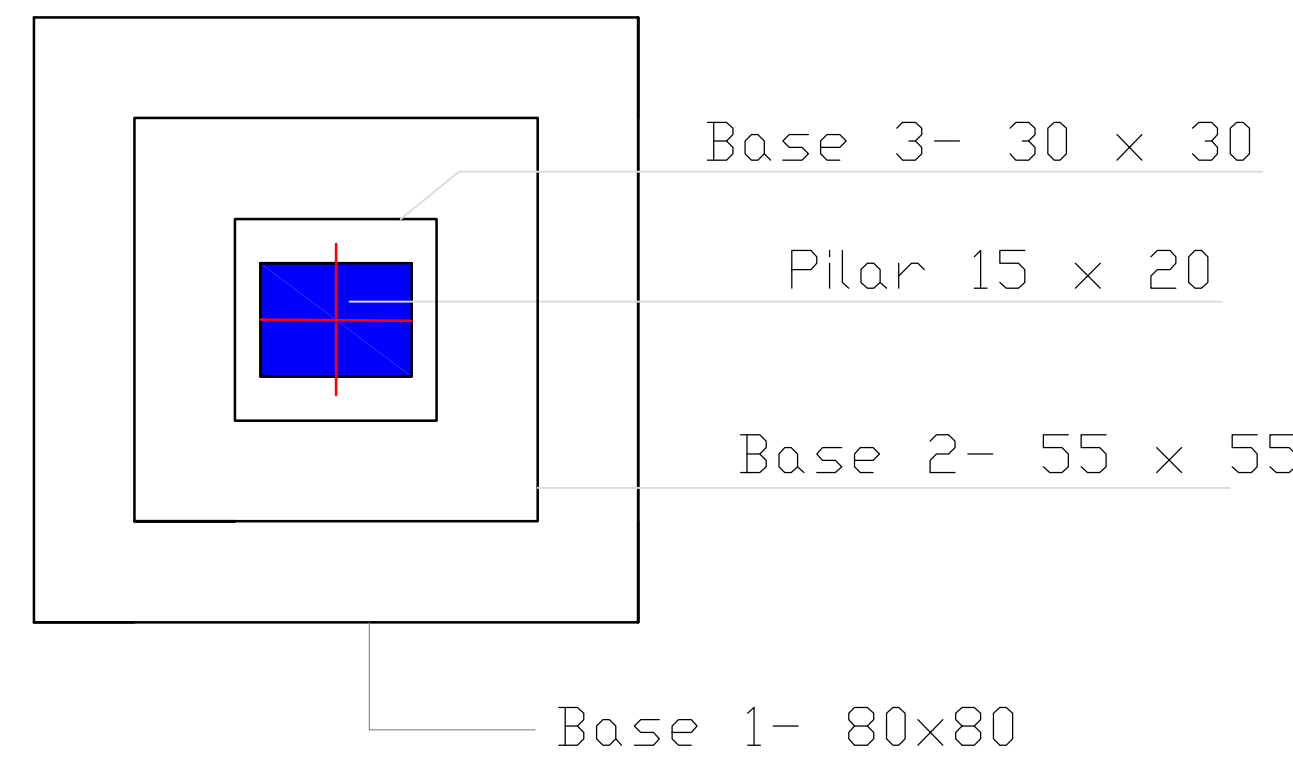
Observação: Nos pilares P34 e P38 deixar esperas até encontrar a VSi24

Pilares de P27 a P45 altura 2,60m - 1,65 m3

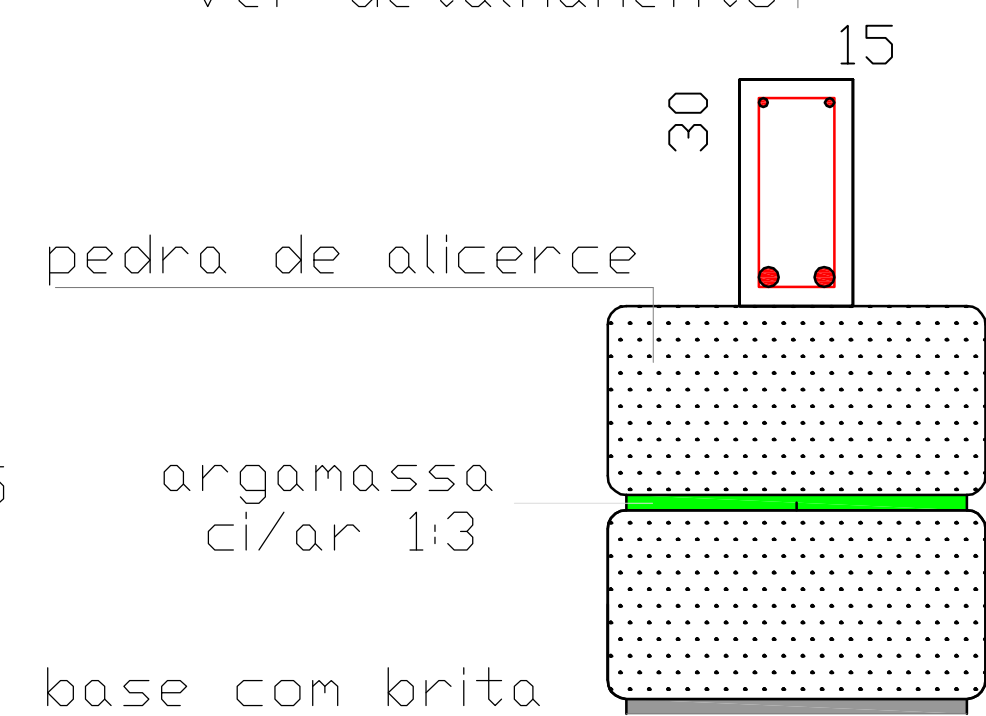


Sapatas

Sapatas 80 x 80 x 65 - 7,75 m3



viga de fundação periféricas  
Ver detalhamento



argamassa  
ci/ar 1:3

base com brita